



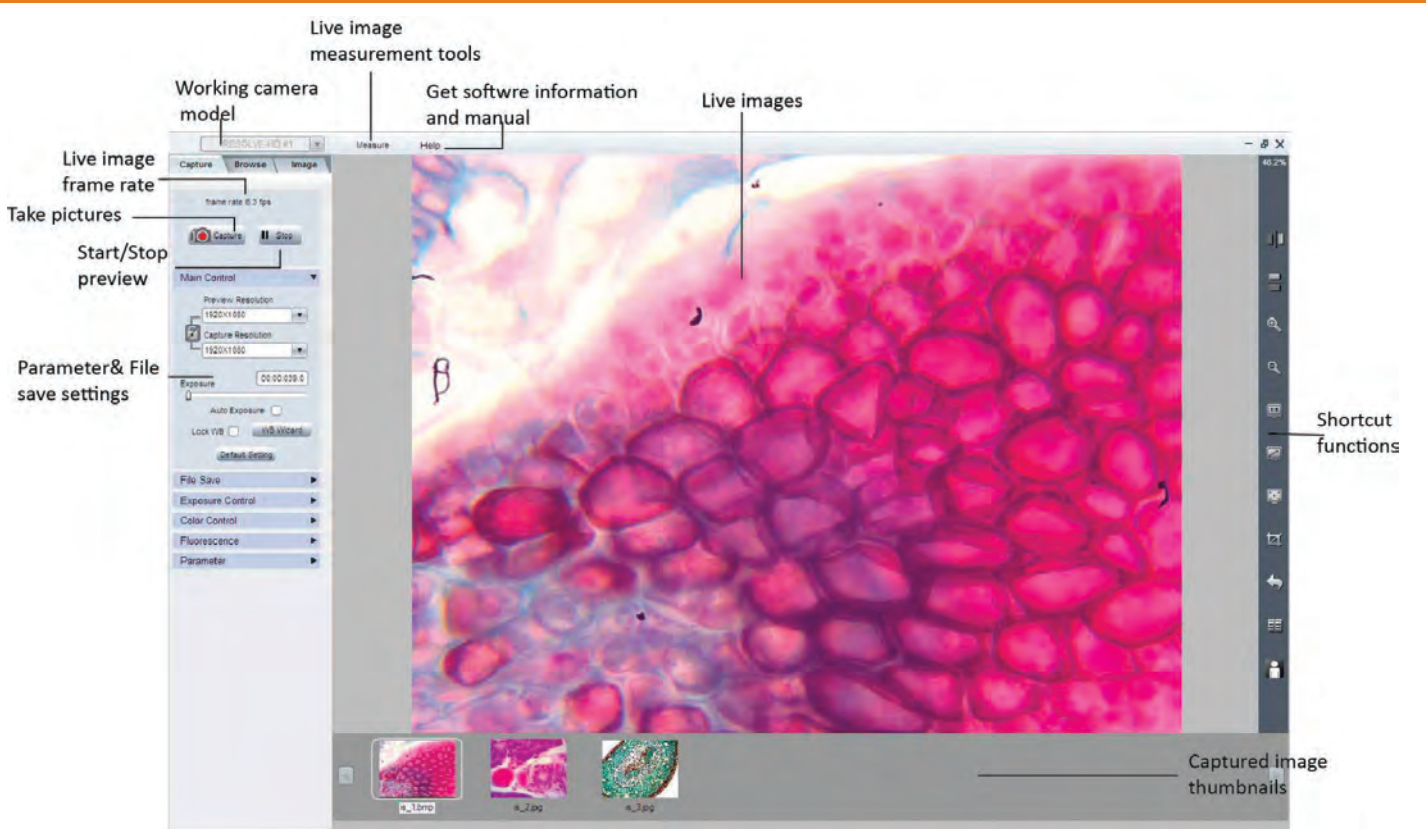
Data Sheet

echoIMAGE-IS  
Capture

# echoIMAGE-IS Capture

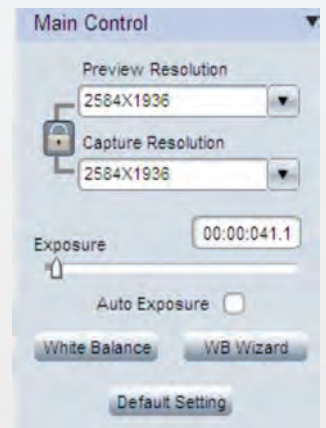
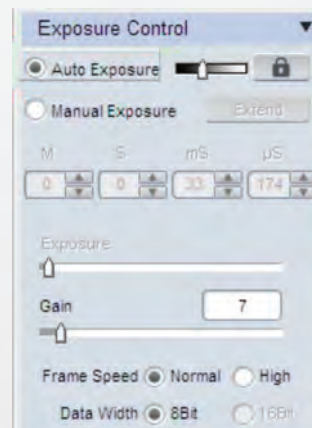
echoIMAGE-IS Capture professional imaging software application

- > User-friendly interface, complete camera parameter control, advanced image processing functions, live and still image measurements provided for highly efficient workflow



echoIMAGE-IS Capture provides the full control of echoCAM:

- > Exposure time
- > Color control, red, green and blue channels
- > Gain setting to adjust the image brightness
- > White balance
- > Saturation



# echoIMAGE-IS Capture

echoIMAGE-IS Capture  
different measure  
processes features



|  |                          |  |
|--|--------------------------|--|
|  | <b>Show Scale Line</b>   | On/off the scale line on the picture.  |
|  | <b>Calibrate</b>         | Create calibration file.   |
|  | <b>Calibrate table</b>   | Available calibration file list. Allow to add, edit and delete calibration file.   |
|  | <b>Decimal</b>           | Set precision measurement. Allowed decimal range is from 0 to 7.   |
|  | <b>Measurement list</b>  | List all the measurement data.   |
|  | <b>Layer</b>             | Create a multiple layers to apply measurements and save layer information.   |
|  | <b>Delete All</b>        | Delete all the measurements and layers.  |
|  | <b>Unlock/Lock</b>       | Unlock/lock the measurement operation. Allow to do the same measurement continually when LOCKED. It is locked by DEFAULT.  |
|  | <b>Select</b>            | Select to change measurement or the measurement data position.   |
|  | <b>Line</b>              | Measure the length.  |
|  | <b>Parallel</b>          | Measure the distance of parallel. Allow to do multiple parallels' distance measurement. Double clicking to end parallel measurement.   |
|  | <b>Perpendicular</b>     | Measure the perpendicular length. Allow to do multiple perpendiculars' length measurement. Double clicking to end perpendicular measurement.   |
|  | <b>Rectangle</b>         | Measure rectangle height, width, area and perimeter.   |
|  | <b>2-points circle</b>   | Use center point and point-on the circle to draw a circle. Give the radius, area and perimeter of circle.  |
|  | <b>3-points circle</b>   | Use 3 points on the circle to draw a circle. Give the radius, area and perimeter of circle.  |
|  | <b>Diameter circle</b>   | Draw a circle according to the diameter. Give the radius, area and perimeter of circle.  |
|  | <b>Concentric circle</b> | Use center point and radius to draw concentric circle. Give concentric circles' radius, area and perimeter. Allow to do multiple concentric circles measurement. Double clicking to end the circles measurement. |
|  | <b>Polyline</b>          | Measure polyline length.   |
|  | <b>Polygon</b>           | Measure polygon area and perimeter.  |
|  | <b>Arc</b>               | Measure a curve angle, radius and length.  |
|  | <b>Angle</b>             | Measure the angle.   |
|  | <b>Count</b>             | Counter. Manually count the quantity.  |
|  | <b>Annotate</b>          | Add remarks on the images.   |
|  | <b>Delete</b>            | Delete previous measurement. Select it then click on the measurement to delete it.   |
|  | <b>Cross-ruler</b>       | On or off cross-ruler on the images. The unit of the ruler depends on the applied calibration file.  |

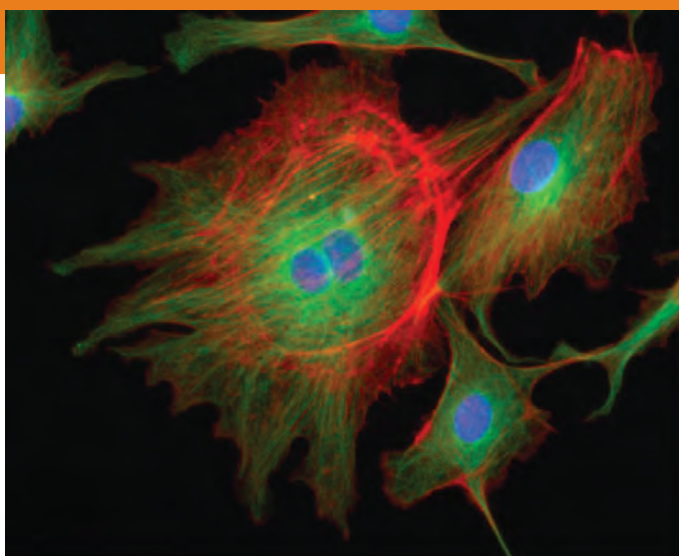
# echoIMAGE-IS Capture

## Image Processing

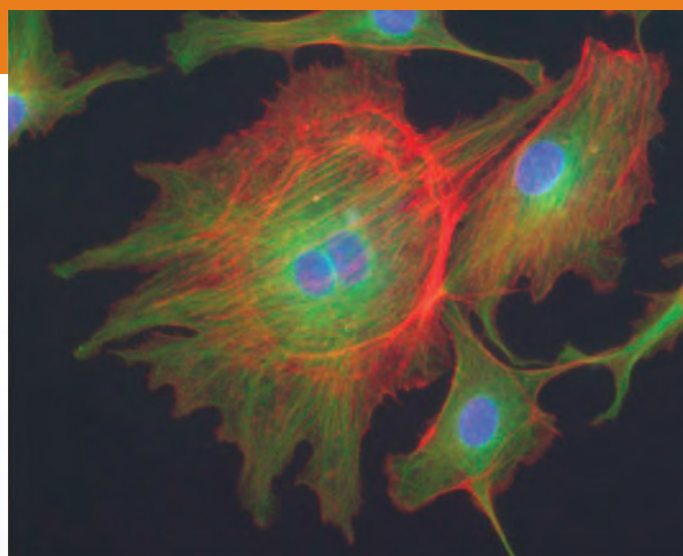
- > Advanced image processing functions integrated into echoIMAGE-IS Capture including:
  - fluorescence combination,
  - high dynamic range
  - focus stacking
  - image stitching



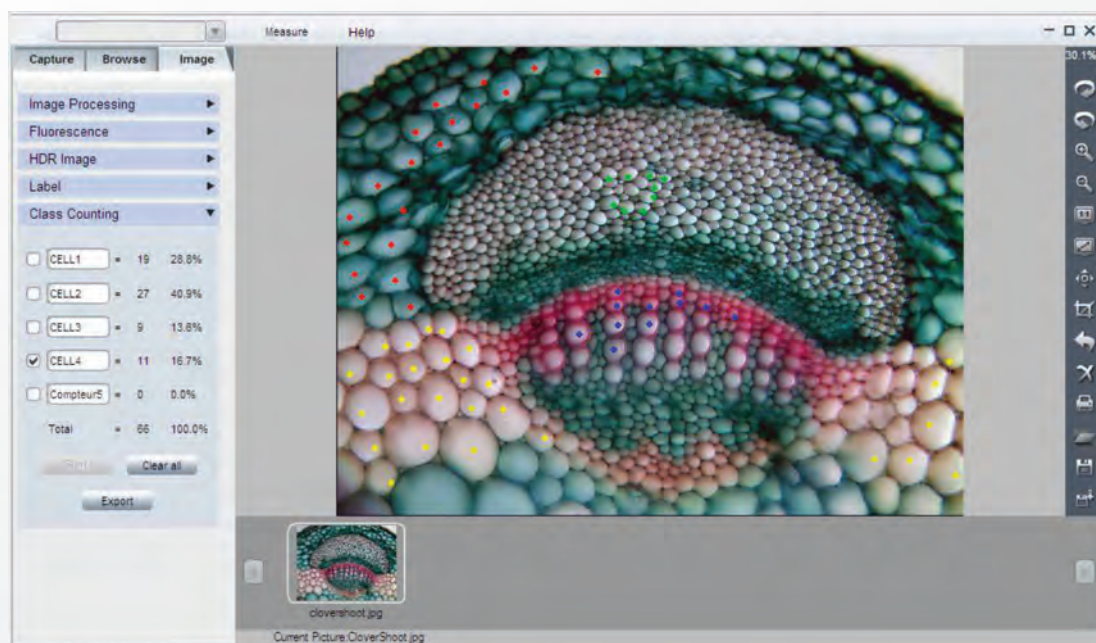
Original images



Combined image with optimization



Combined image without optimization





**DEVCO S.r.l.**

Via Marzabotto, 59 20037 Paderno Dugnano (MI)  
Tel +39 0283591153 - Fax. +39 0295441300  
[www.devcosrl.it](http://www.devcosrl.it) - e-mail: [info@devcosrl.it](mailto:info@devcosrl.it)

[www.echo-lab.it](http://www.echo-lab.it)